



Joe Phillips Building



YEAR BUILT

1911



TOTAL BUILDING SQ. FT.

26,827



OPERATING COSTS INC. PTAX

\$16.58 - \$17.10



ZONING

DC



CEILING HEIGHT

N/A

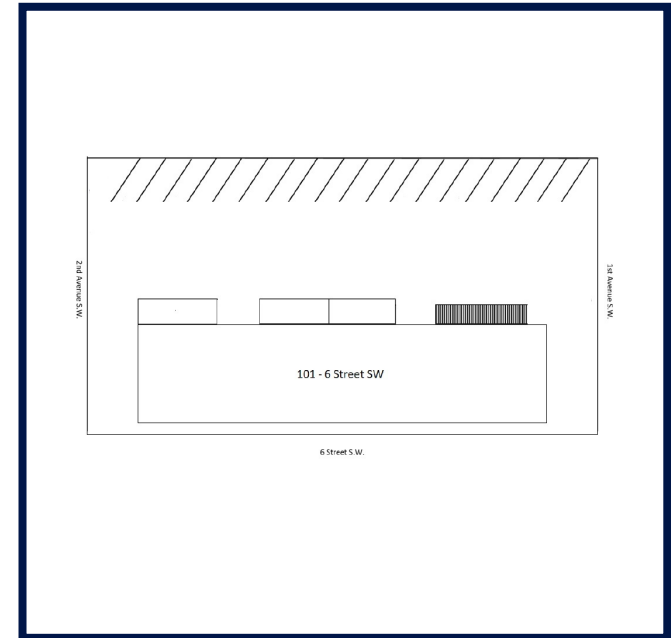


PARKING

Reserved Surface



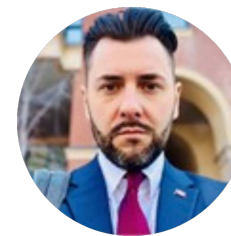
UNIT	AREA	AVAILABLE	LOADING	COMMENTS	SPACE PLAN
Unit 105	3,812 SQFT	Immediately	N/A	Bright, clean, main floor office with a unique floor plan. Parking available.	View Plan



JOE PHILLIPS BUILDING – Completed in 1911 and originally named the Graphic Arts Building, this historic building was modernized in 2004. It is a hidden gem among downtown office users given its impressive interior finishes, proximity to Eau Claire walkway, bow river, Prince’s Island Park and the iconic Peace Bridge.



Have a question? Contact us.



Theodor Arbuzov
Leasing Manager
TArbuzov@pbaland.com
(403)777-2739

Unit 105

