



JOE PHILLIPS BUILDING

101 6th Street SW

JOE PHILLIPS
BUILDING

101 SIXTH STREET S.W.



YEAR BUILT 1911



BUILDING SQ. FT. 26,827



ZONING DC



CEILING HEIGHT 8.6 FT

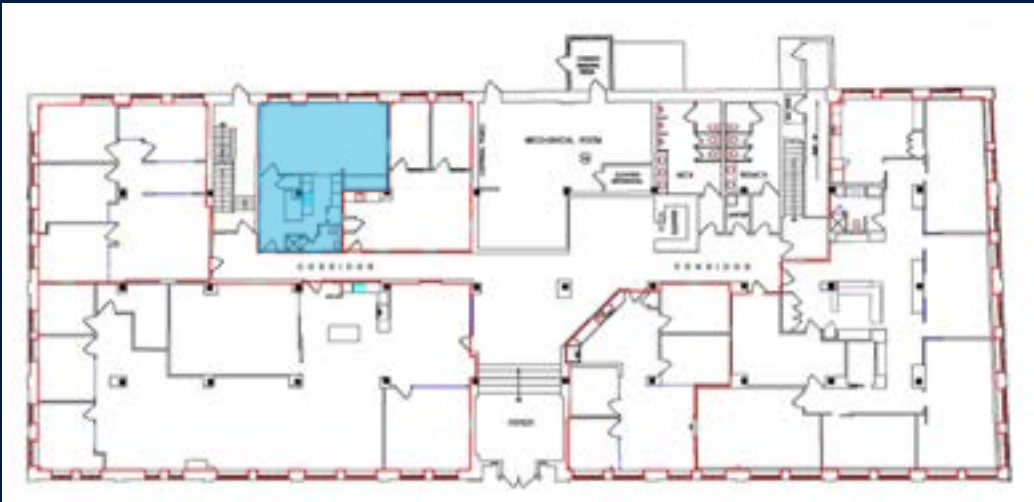
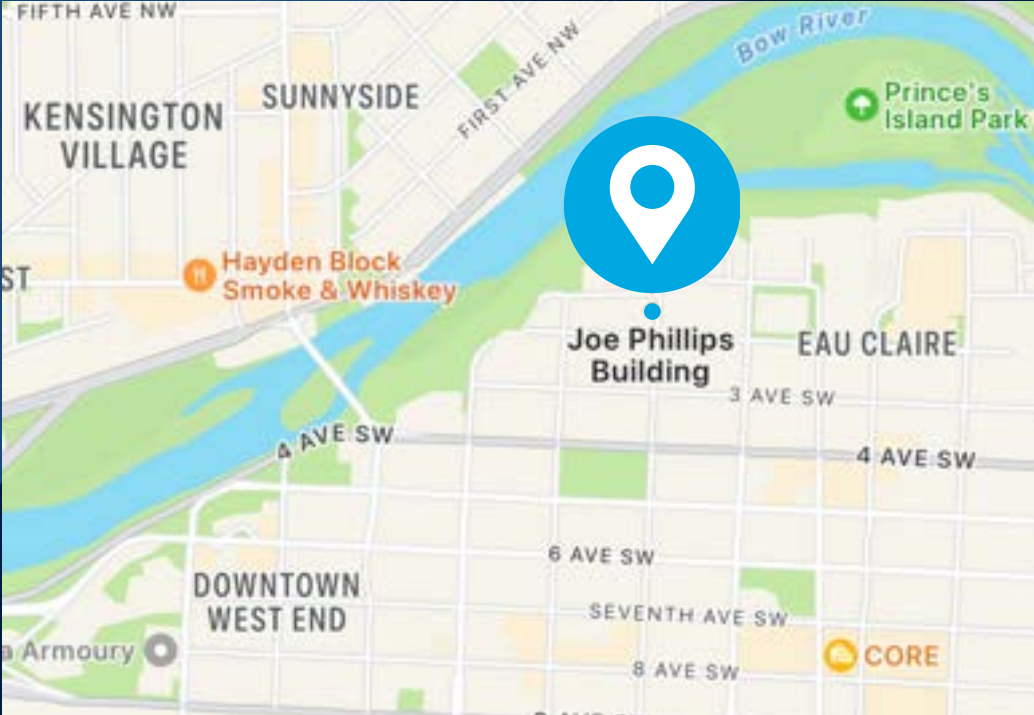


PARKING RESERVED



PBALAND.COM

JOE PHILLIPS



FEATURE PROPERTY

JOE PHILLIPS BUILDING

Completed in 1911 and originally named the Graphic Arts Building, this historic building was modernized in 2004. It is a hidden gem among downtown office users given its impressive interior finishes, and proximity to Eau Claire walkway, Bow River, Prince's Island Park and the iconic Peace Bridge.



PBALAND.COM

FOR LEASE

OPPORTUNITY

Unit 120B, is a premium office space of 881 sq. ft. available in the prestigious Joe Phillips Building starting January 1, 2025. Seize this opportunity to secure a boutique, independent office unit in a prime location.

This fully fitted, self-contained space includes one open perimeter office, an additional private office, a welcoming kitchen area, and a private restroom with shower. This rare offering is ideal for businesses seeking a quiet, well-appointed office in a highly desirable area.

JOE PHILLIPS
BUILDING

101 SIXTH STREET S.W.

BUILDING AMENITIES



Available January 1, 2025



Ample Parking



Unit Area - 8,81 sq. ft.



Ceiling Height - 8.6'



Open floorplan



Modern HVAC and Air Conditioning



PBALAND.COM



Have a question? Contact us.

Theodor Arbuzov

Leasing Manager

tarbuzov@pbaland.com

O: (403) 777-2739

M: (587) 973-3616

120B



PBALAND.COM

120 LAYOUT

